



University of Waterloo
School of Architecture

ARCH 686
Winter 2016

COMPETITION ELECTIVE

Ryterna modul Architectural
Challenge 2015

project:

JUST HOME.

Faculty: Terri Meyer Boake

Student: Elisa Nicoletto



The Competition:

The competition theme was to design and provide social housing for asylum seekers based on a modular construction as the key element of the housing. The Competitor had to select among different cities to design a social housing. Of the many available countries this project chose to develop a proposal in Paris, on the Seine's shores.

The Proposal:

The Project Just Home aims to develop a proposal that is not only a building but also a way of thinking and looking to an actual problem.

This project is proposing a new way to develop temporary housing. The water is becoming here a powerful means, a space that doesn't have a commercial value. The temporality of this architecture for seekers refugee at the same time allows to believe that the structure can be moved during the time in different locations.

The first step to set the final distribution of the spaces has been playing with little colored cubes. Giving to every color a function as: kitchen, livingroom, bedroom and bathroom. In this way the project started to "play with the spaces". Different combinations to create different relations and spaces. This preliminary studies has been a fundamental step for the final proposal. The concept started looking to the small scale up to the big scale; from the room to the unit, to the house until a more complex concept of housing.

Just Home works on small modular sizes (300x290x310cm cube) and propose three different topology of finishing: precast concrete panels, wood cladding, and metal panels.

The standard dimensions of the single block were in some cases too tiny to accommodate communal functions as a living room and kitchen. For this reason an additional block of 150 x 300 cm has been introduced in addition to the standard box. This parallelepipedon primarily made on glass allows the natural day light to come in the inside space and at the same time represent the point of entrance and distribution of the house.

The communal spaces were the most important part of this project. For this reason the kitchen and livingroom are merged together with the additional parallelepiped. In this way the house can offer a big open space where the family can join together. In other cases as the case of the washroom the standard block (300x310x290 cm) would be too big for this typology of housing. Therefore the space has been divided to obtain a little corridor that connects the living area to the bedrooms and a little closet serving one of the bedrooms.

The project presents three typology of unit, from the smaller for 2 people to the medium for 4 people until the bigger size for 5 people. Thanks to the modularity of the spaces, "Just Home" proposes a typology of housing that can develop and expanding during the time.

With attention to asylum seekers needs, this project aimed to solve the problem of the social housing proposing a new and unique approach that wants to enrich the all Parisian Community.

The research:

On the next paragraphs there are the main references that this project took as an example. They have been rather than only a formal and visual connection a source of inspirations and reflection.

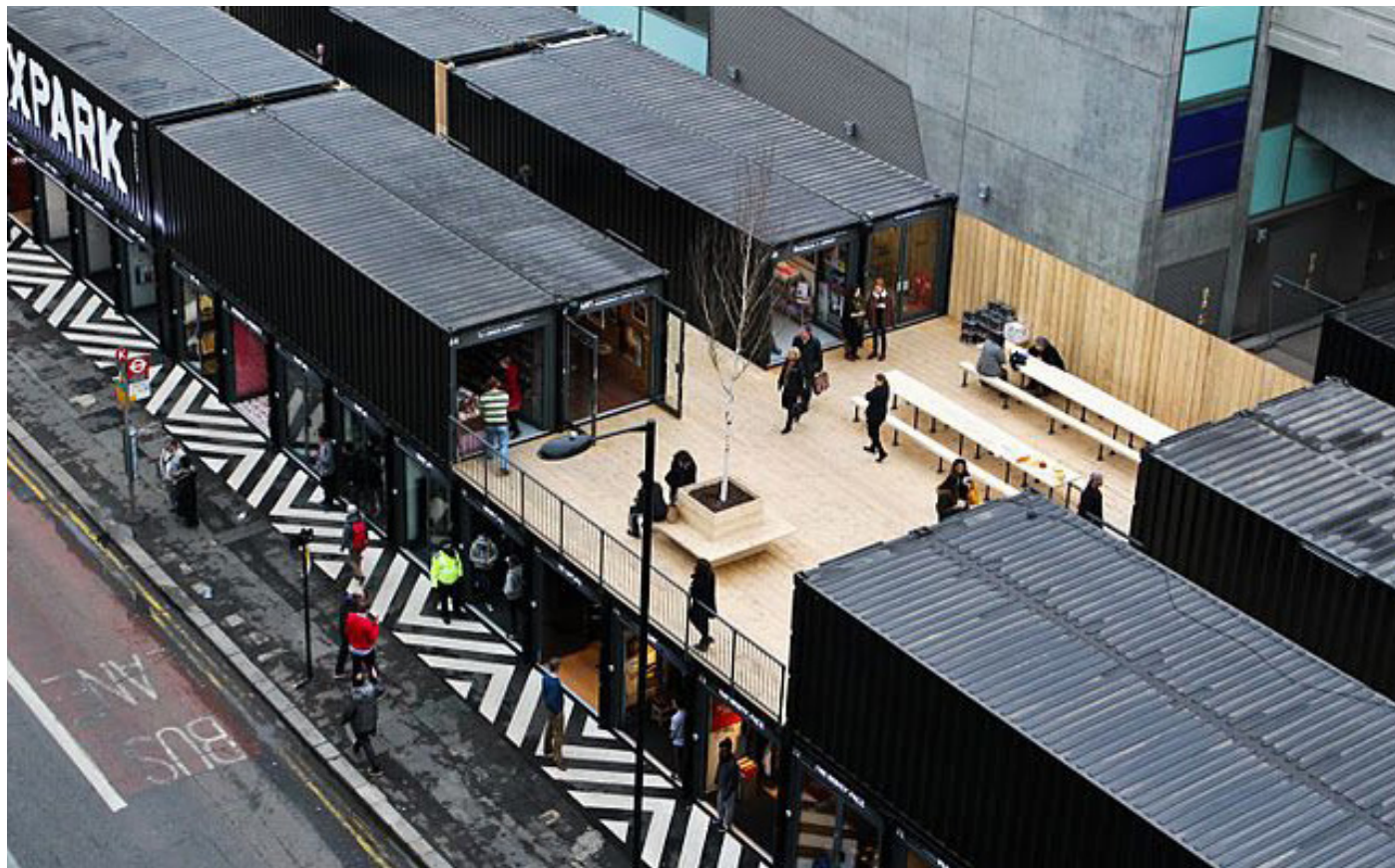


– *Roller Rink and Cube Store from Beekmans, de Boer. "Pop Up City: City-Making in a Fluid World" p.142*

Other interesting researches on this theme of the pop up cities are the many pop up stores seek to breathe life into an disused space. An example of cubic shaped store was part of a uniquely social fitness experience, offering a place to meet, shop, and enjoy the sun with a retail outlet next door. This example settled in the High Line in New York has been a temporary building that at the same time offers to support the maintenance and operational costs of the Manhattan park.

This has been a great point of thinking to the competition project. The new neighbourhood is not only a new area of development for host seekers, but at the same time is going to offer new public spaces for all the city where people can share and meet, guaranteeing a full integration in the existing environment.

1_ *Roller Rink and Cube Store*



2_ Boxpark Pop-Up Mall

_ Boxpark Pop-Up Mall from Beekmans, de Boer. “Pop Up City: City-Making in a Fluid World” p.143

Boxpark Pop-Up Mall is an other example where the roots of Pop up retail lie in a single shop appearing for brief amount of time in unique locations. Box park is a low-cost option for renters looking for a temporary sites where to sell their products. Interesting is how the concept can be attractive to any city with a dead public space.

This concept of revitalize a dead public space is one of the most important steps that “Just Home” aims to achieve with his proposal to create a new neighbourhood in a space that at the moment has not a buildable or urban value.

In fact choosing the bank of the Seine this project is solving two issues: to give an unique location to the new Social Housing and at the same time to offer a new urban development of a part of the downtown city that at the moment is not used.



3_ Food Trucks without Food



4_ Boston City Hall to Go

_ Food Trucks without Food, in New York, USA. and Boston City Hall to Go from Beekmans, de Boer. “Pop Up City: City-Making in a Fluid World” pp.122-123

Food Trucks principles are spreading all over the place to a wide variety of sections, including fashion, government services, and pet grooming. This project turned an ice cream truck in a clothes and shoes store, taking the brand all around New York. The Trucks allows at the same time to move frequently and cover a big area of business. An other example shows how they convert a Truck in a Government Service for the Boston City Hall, the project called “Boston City Hall to Go” comes from the need to offer an essential government service with a more flexible and accessible location and convenient opening hours for all the local residents. These are just few examples of how this approach can be repeated with many different programs.

The project “Just Home” take inspiration from this concept of adaptability and flexibility. In a smart way what the project aims to crate is to convert the dimensions that are usually the standards for shipping containers into a modular unit always ready to develop when necessary.



Extensions, by Adam Mornement

As we know the theme of the small-scale residential extensions has been largely developed especially in the last years. Factors as high property prices and flexible lifestyles are the main reasons that conferred to this theme an important value. It is for this reason that the additions and transformations of the private homes are now taking a large space in the Architecture world.

The book by Adam Mornement "Extensions" is looking more deeply many contemporary references. It has been interesting how this book is presenting many examples describing the client's requirements, and the architect's solution. The outcomes are various and all of them have revitalized and enriched the original building. "Just Home" is looking these examples rather than a formal reference as a concept of development.

5_ Extensions, book.



Little Tag Along from Beekmans, de Boer. "Pop Up City: City-Making in a Fluid World" p.34

The Artist Kevin Cyr has designed a camper specifically meant for cyclists. The piece is part of the idea of shelter as a safe haven for a future worst-case scenario as well as more optimistic notions of home and self-preservation. The micro-caravan is fully furnished but the sizes have been halved.

The interesting part of this project is how it reflects to a particular theme, as the cyclism. This starts to invest in the concept of the seeking housing as a main theme, not only an housing but a home for a particular kind of neighbourhood, people seekers asylum. People that left everything and are now projected on a new land with a totally different environment. For this reason this project starts to think how to solve this problematique.

Building a housing in one of the best part of the city is not the only move. This project aims to create a safe environment, outside with the creation of a new public space, and inside the house giving more emphasis to the communal spaces.

Looking the plans of this project we can see that even if the dimensions of the house are relatively smaller than the usual the combination of kitchen, livingroom and distribution space allows to create a big open space.

Doing this the inhabitants are encouraged to live more in this shared/common space.

6_ Little Tag Along

**NOW 3 NEW MODELS
of the Dormobile Romany Caravan**



HEDFORD-MARTIN WALTER DORMOBILE ROMANY CARAVANS

Basic • Super • de Luxe • 2 or 4 berth • 90 or 102 in. wheelbase

_From Rooftop Architecture Building on an elevated surface
by Ed Melet/Eric Vreedenburgh Nai Publishers

The book is facing the problem of how the space in big cities has to be used more intensively, even if the possibilities are limited. The options that the book proposed, is the uses of the flat roofs of residential building. Rooftop buildings can therefore intensificate the existing situ.

A great example that this book shows is the "Pickup Dormobile, made on the 1960 from Merle D. McNamee this little caravan used a part of the rooftop to create an additional open spaces.

In the same way Just Home wants to offer to all the units a private open space that is a terrace for the ground level units and a rooftop-terrace for the 1st level units.

In addition to the housing is proposing a public communal space of 3 by 9meters. A building that takes the same dimensions of the standard module of the house but is repropoed here as a simple metal shapes. A space that can be used from all the community and all the visitors in many different ways. And represent the ambition of the project to create a urban space for all the City.

7_ Pickup Dormobile

_ReSTART pop-up mall

Many other exemples of project that used the shipping containers to developpe and riqualficate new part of the city have been used as reference for this project. One of them is the Christchurch's Shipping Container Shopping Mall called Re:START pop-up mall. A temporary shopping mall was created in few months in the same location as the old mall destioied by an earthquake in 2010. The new mall has been constructed of shipping containers. Shipping containers were chosen due to their strength and durability, ease of transportation, and relatively low cost. Simply to design and planning and great adaptability are making them the ideal material for this temporary pop-up constructions.



8_ Re:START pop-up mall

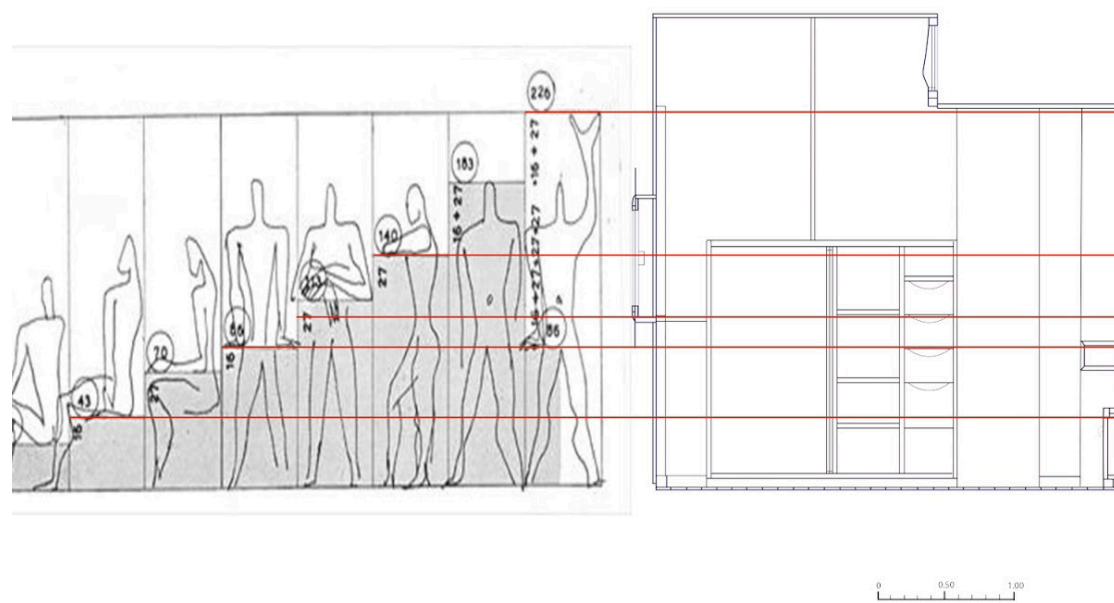


_ “Le Petit Cabanon”

Last but not not less important is the study of Le Corbusier for “Le Petit Cabanon”. The Architect built the Cabanon in 1952 for his holidays at Cap-Martin on the Cote D’Azure- France. The dimensions of the unit are of 366x366 cm by 226 cm height, on a total surface of 15 sqm. Le Cabanon represents the research on the notion of the minumum human standard space. Everithing fitting and has been studied for the human dimensions, every color and every view aims to emphasise the interior and exterior space. Every window has been setted in a precise position in order to have a view of the outside from every part of the house. In fact he placed the windows to provide view towards the sea, towards the vegetation, and towards the mineral landscape. The all building was prefabricated and assembled on place.

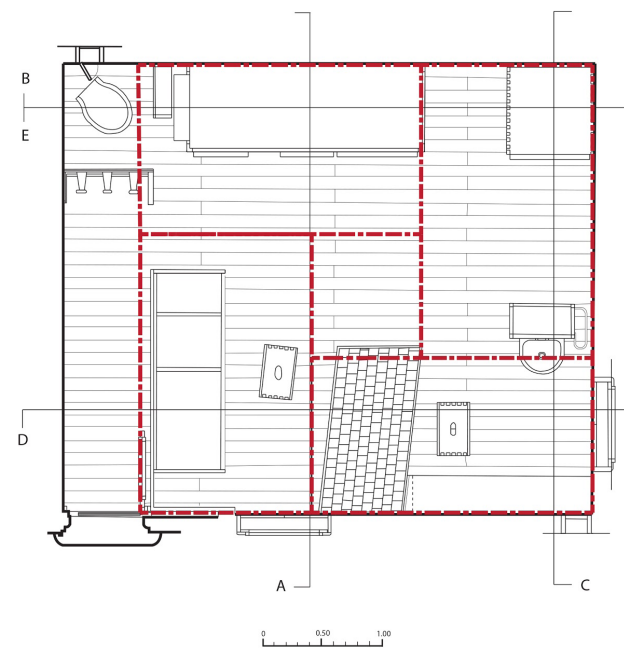
Everithing about this project inspired and influenced the proposal for the competition. In particular the study of the minimal human dimensions has been the ruler for the creation of the unit spaces of Just Home.

9_ Le Petit Cabanon

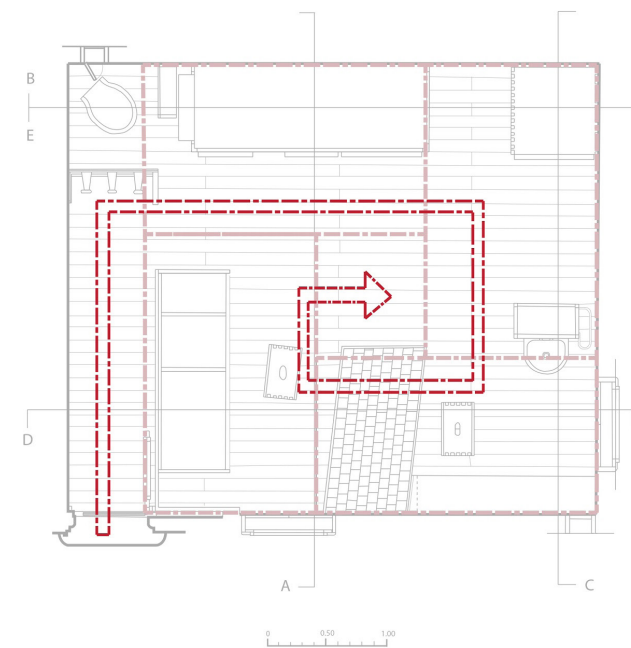


0 0.50 1.00

Pet
Cor



0 0.50 1.00



0 0.50 1.00

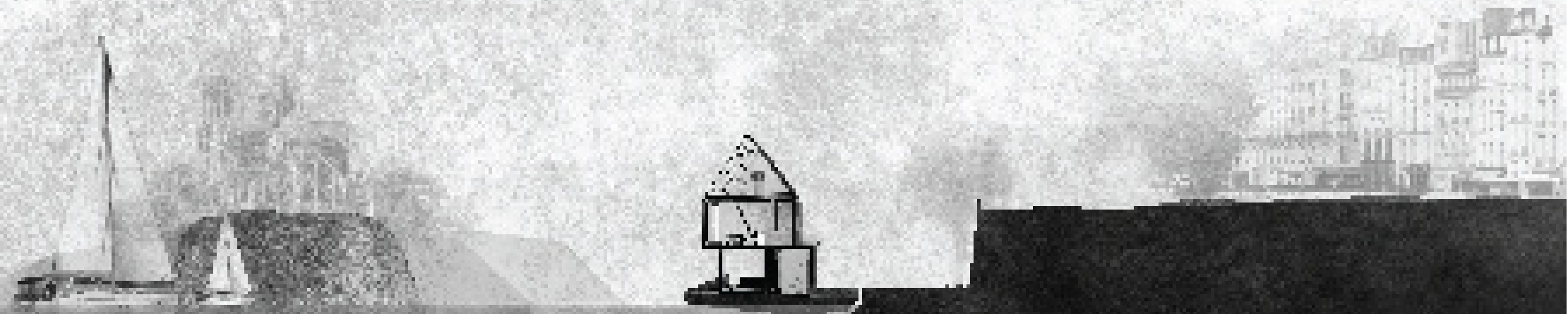
JUST HOME.

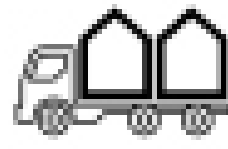
At the end of a long journey, here there is home.

At the end of a long journey, here there is home. The home is not just a place to live, but a place to belong. It is a place where you can find comfort and security, and where you can start a new chapter in your life. The home is a place where you can find peace and tranquility, and where you can find the love and support of family and friends. The home is a place where you can find the warmth and coziness of a hearth, and where you can find the joy and happiness of a new beginning.

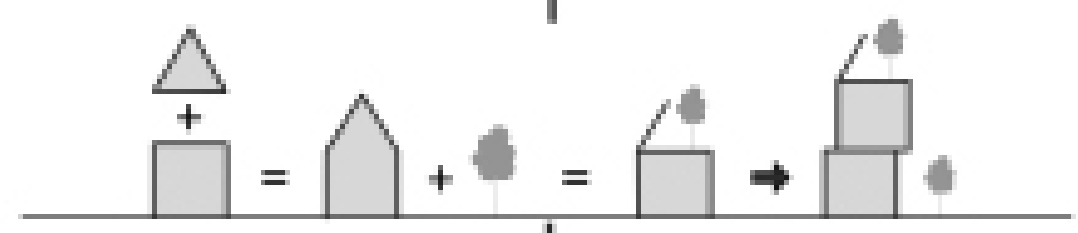
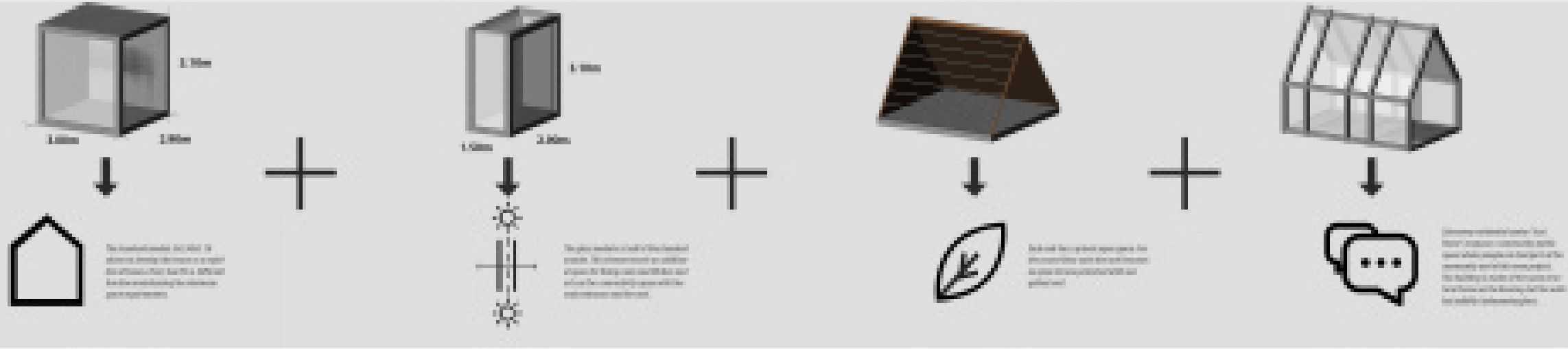
The home is a place where you can find the love and support of family and friends. It is a place where you can find the warmth and coziness of a hearth, and where you can find the joy and happiness of a new beginning. The home is a place where you can find the peace and tranquility of a quiet life, and where you can find the comfort and security of a safe haven. The home is a place where you can find the love and support of family and friends, and where you can find the warmth and coziness of a hearth.

The home is a place where you can find the love and support of family and friends. It is a place where you can find the warmth and coziness of a hearth, and where you can find the joy and happiness of a new beginning. The home is a place where you can find the peace and tranquility of a quiet life, and where you can find the comfort and security of a safe haven. The home is a place where you can find the love and support of family and friends, and where you can find the warmth and coziness of a hearth.





FUNCTION STANDARD MODULE **CONNECTION** ADDITION MODULE **ROOF TERRACE** ADDITION MODULE **COMMUNITY HALL** ADDITION MODULE

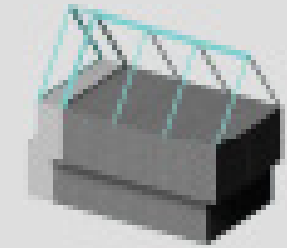
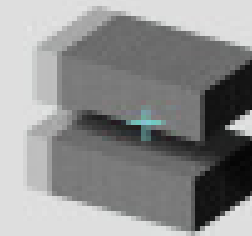
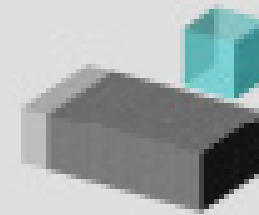
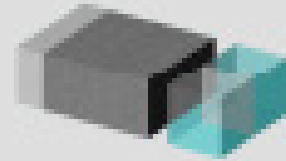
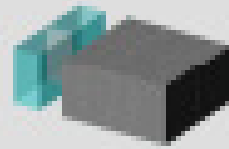
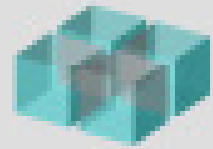


A new landscape...a symbol of Community in the middle of the city



THE PROCESS
DEVELOPING A UNIT

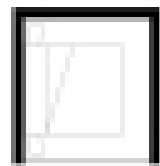
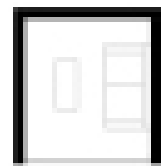
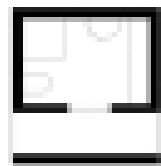
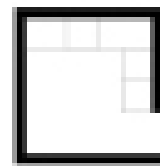
modularity, flexibility, compatibility, creativity



MINIMUM FUNCTIONS MODULES

PRIMARY NEEDS

plug in boxes



Minimum size of a module is 10m². The minimum size of a module is 10m². The minimum size of a module is 10m².

Kitchen

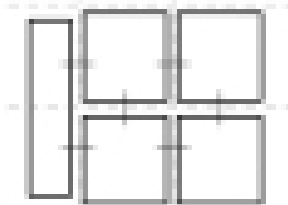
Washroom

Living room

Bedroom

CONNECTION

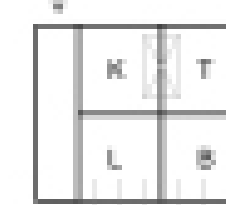
MAIN GRID



Minimum size of a module is 10m². The minimum size of a module is 10m². The minimum size of a module is 10m².

MINIMUM MODULE

MAIN DISTRIBUTION



Minimum size of a module is 10m². The minimum size of a module is 10m². The minimum size of a module is 10m².

ORIENTATION

MAIN EXPOSITION



Minimum size of a module is 10m². The minimum size of a module is 10m². The minimum size of a module is 10m².



INTENTION

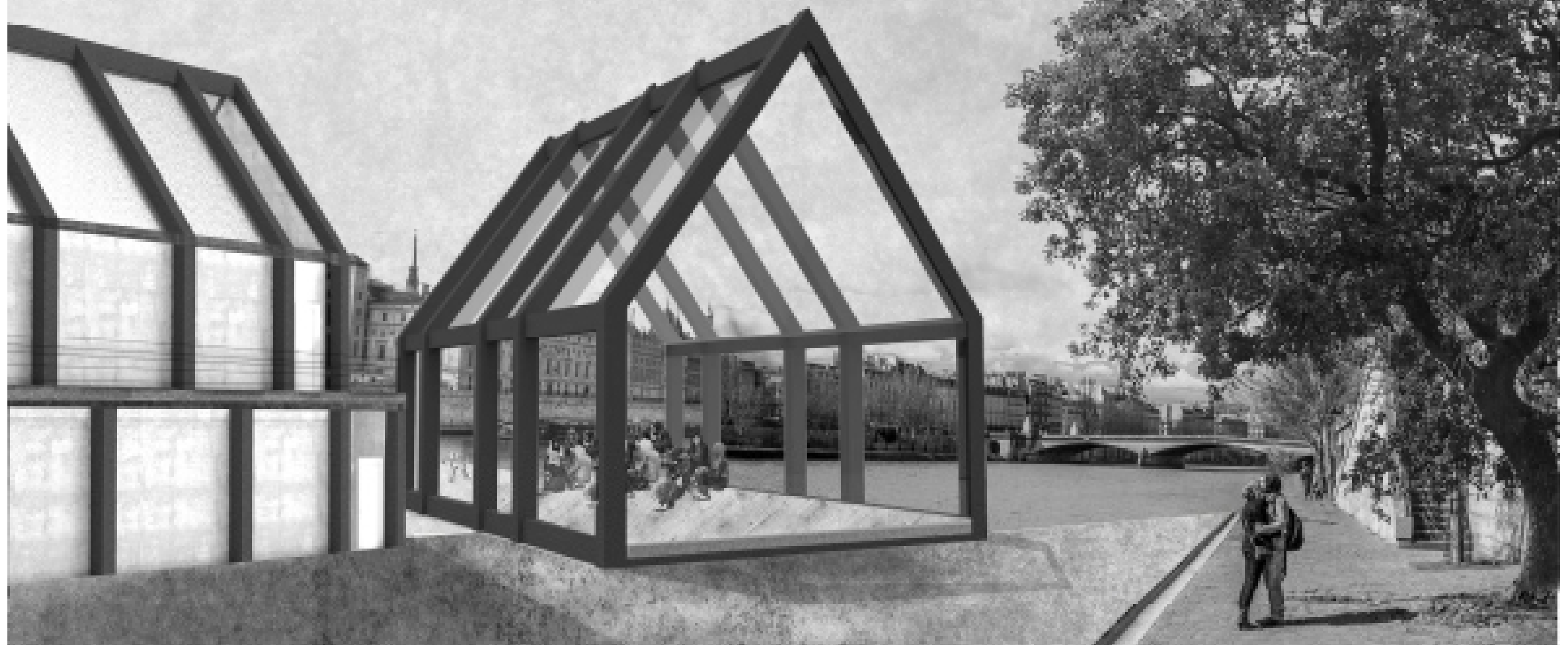
STRATEGY

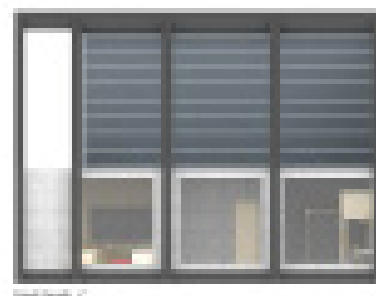
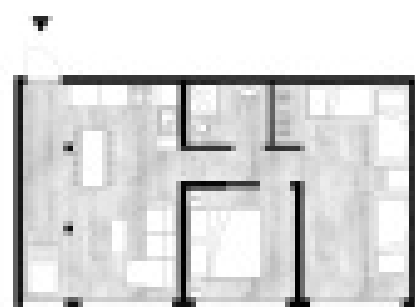
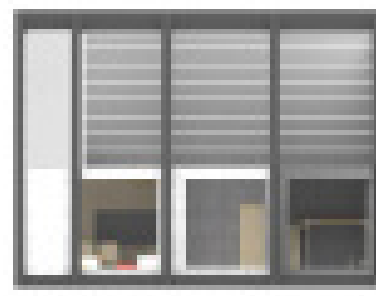
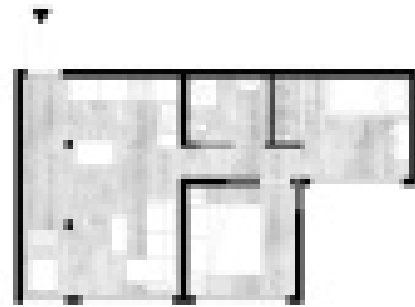
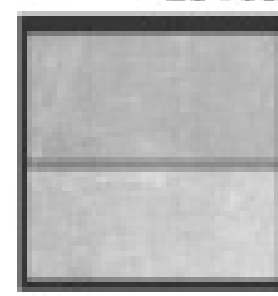
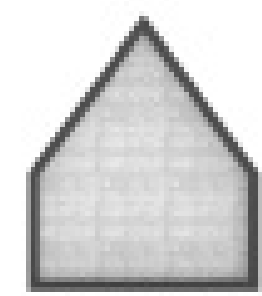
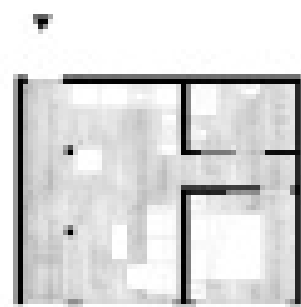
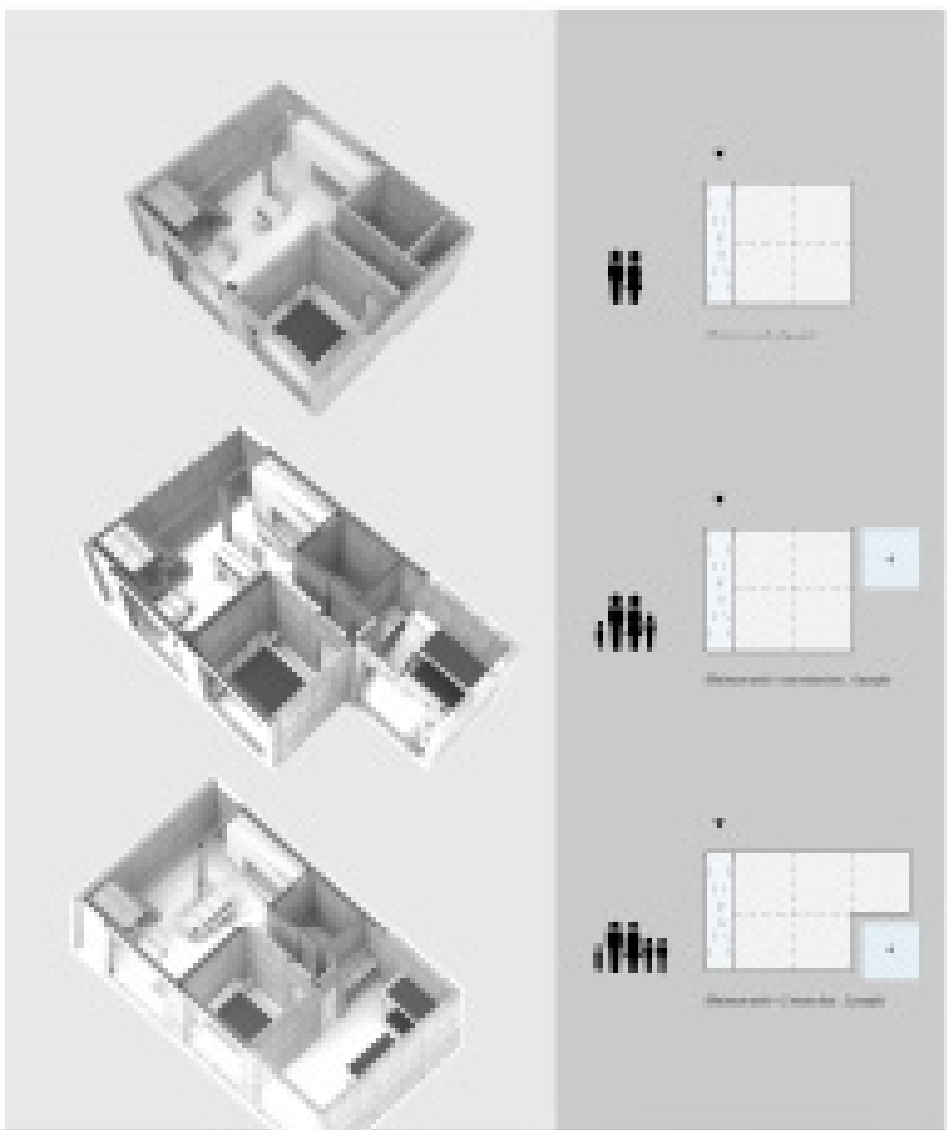
Each module consists of a 3m by 3m box that holds a certain function of the home: sleeping, eating, dining, living, working, etc., with each component designed to link to any other for a truly customizable experience.

These functions are anchored by a glass module which acts as the house's main entrance. The home's communal spaces are seen as the most important, and are consequently always linked to the glass module which allows for the space to expand while also functioning as a light box to bring filtered light into the living spaces which need it the most.

Finally, the rooftop module completes the look of the home, while also affecting the family's private outdoor space to grow food, relax, and enjoy the best of the city. Additionally, the rooftop module allows the family an opportunity to expand their business day with.

The homes are situated such that they can provide panoramic views of the riverbank while maintaining privacy against the busy city. The south-facing glazing also mediates the solar heat gain in winter and summer time to make the homes more energy efficient, providing a comfortable atmosphere year-round. Sliding doors on the south provide access to a riverside terrace for the residents.





THE UNITS

SPACE, PLANTS AND FACADES



This concept is born primarily out of the desire to implement options which could succeed in instilling the true feeling of home that over-luxury is seeking. It is for this reason that the modular building components come together to form a clean, simple landscape of homes, easily recognizable as a community in the heart of the city.

The simplicity of the modules creates the community as a string of pitched roof homes, while facilitating the need for expansion and recombination.

The placement of these modules along an urban riverfront presents an opportunity to revisit traditional housing typologies, maximize the efficiencies of our cities, and properly incorporate these marginal communities into the heart of the city. Unlike land water cannot be owned and created for. Communities built on the river further benefit from the implied freedom of water.



Bibliography:

- _ *Boxpark Pop-Up* Mall; from Beekmans, de Boer. “Pop Up City: City-Making in a Fluid World”
- _ Extensions, by Adam Moenement
- _ *Food Trucks without Food* and Boston City Hall to Go; from Beekmans, de Boer. “Pop Up City: City-Making in a Fluid World”
- _ *Little Tag Along*; from Beekmans, de Boer. “Pop Up City: City-Making in a Fluid World”
- _ Pickup Dormobile; from Rooftop Architecture Building on an elevated surface by Ed Melet/Eric Vreedenburgh Nai Publishers
- _ Roller Rink and Cube Store from Beekmans, de Boer. “Pop Up City: City-Making in a Fluid World”

Websites:

- _ *Re:START pop-up mall*; <http://www.psfk.com/2012/12/shipping-container-mall.html>
- _ Le Petit Cabanon; from Le Corbusier; <http://arquiscopio.com/archivo/2013/09/03/petit-cabanon/?lang=en>
- _ *Le Corbusier's Modulor and the Debate on Proportion in France*; <http://journal.eahn.org/articles/10.5334/ah.by/>
- _ *Shipping container homes*; <http://www.dwell.com/house-tours/article/five-inspirational-shipping-container-homes>

Images websites:

- 1_ *Roller Rink and Cube Store* from Beekmans; <http://ny.racked.com/2011/7/28/7756299/inside-uniqlos-high-line-roller-rink-cubes#4606162>
- 2_ *Boxpark Pop-Up* Mall; <https://it.pinterest.com/pin/482659285041215538/>
- 3_ *Food Trucks without Food*; <https://it.pinterest.com/pin/235172411765841571/>
- 4_ *Boston City Hall to Go*; <http://newurbanmechanics.org/project/city-hall-to-go/>
- 5_ Extensions; <http://library.tcdc.or.th/record/view/b00012698>
- 6_ *Little Tag Along*; <http://holykaw.alltop.com/12-mini-mobile-homes-for-bikes>
- 7_ *Pickup Dormobile*; <http://uk.picclick.com/Vehicle-Parts-Accessories/Commercial-Vehicles-Parts/Vans-Pickups/Manuals-Literature/?page=11>
- 8_ *Re:START pop-up mall*; https://salvarado24.files.wordpress.com/2013/10/img_2439.jpg
- 9_ Le Petit Cabanon; <http://petitcabannon.blogspot.ca>